

RANGE 11

SOP

DESCRIPTION: Range 11 is a small arms live fire and maneuver, unknown distance, and static firing range located at Grid 18STH79607280. The range is equipped with a live fire sniper tower, automated target systems, an observation tower, covered bleachers, ammunition breakout building, and weapons cleaning area. TMIT use is authorized on this range and is limited to 5.56mm and 40mm practice ammunitions only. New events require 60 days advance notice to the Installation Range Safety Officer (IRSO).

STATUS: Active
LOCATION: 18STH79607280
No. Firing Pts: 20 stationary on firing line, 12 in maneuver
Maximum Range: 850m
Nearest LZ: LZ Cardinal Grid: 18STH7954372890

RANGE USES:

Primary Use: Fire and Maneuver with 7.62 machinegun and limited 60mm
Mortar Support by Fire
Alternate Uses: Sniper and static unknown distance training

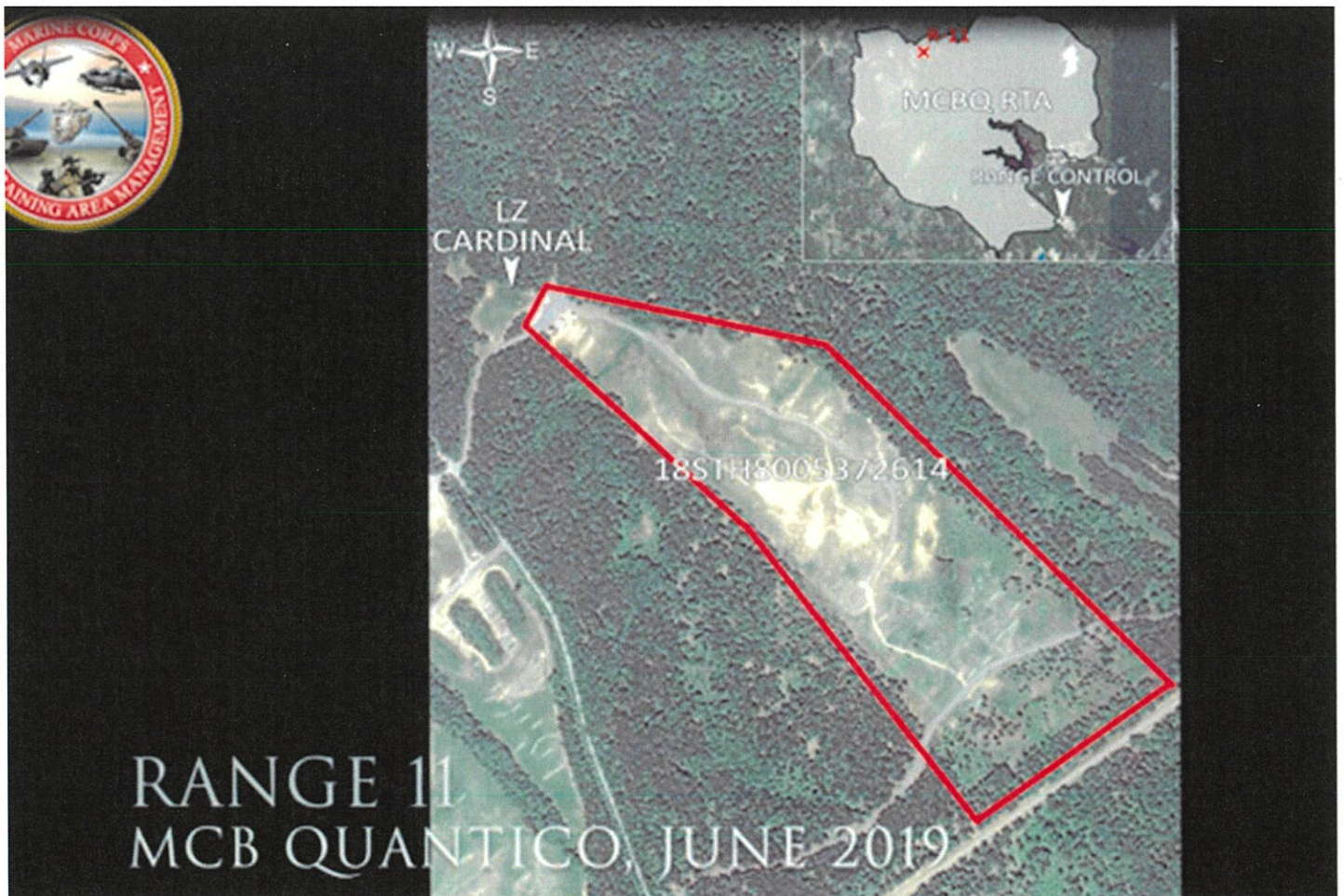
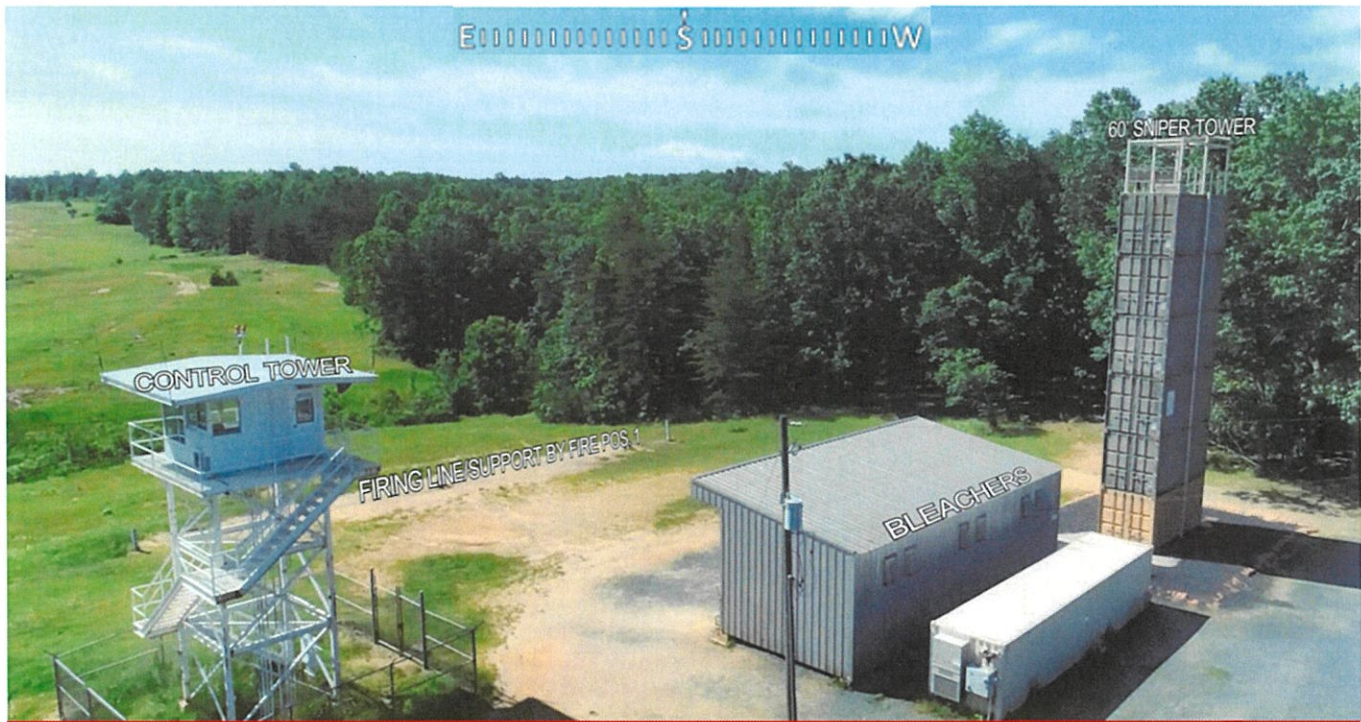


Figure-1



MAIN FIRING LINE, SUPPORT BY FIRE POSITION-1, SNIPER TOWER, CONTROL TOWER, BLEACHERS, AND BATTERY CHARGING

A: MAIN FIRING LINE (MFL) IS FOR STATIC FIRING AND SERVES AS THE ONLY MORTAR POSITION (SBF-1) (SEE FIGURE-8).
 B: SNIPER TOWER REQUESTED SEPARATELY; MFL CANNOT BE OCCUPIED WHEN HOT. RAPPELING/HELO USE PROHIBITED.
 C: UNITS ARE PROHIBITED FROM REMOVING SANDBAGS AND MATERIAL FROM BASE OF THE SNIPER TOWER.
 D: MFL AND SNIPER TOWER ARE ONLY AREAS WHERE .338 AND .300 CALIBER WEAPONS CAN BE FIRED.
 E: CONTROL TOWER IS FOR USE BY RANGE SUPPORT CONTRACTORS. USE BY UNITS REQUIRES PERMISSION FROM IRSO.
 E: BLEACHERS MUST BE PROPERLY POLICED AND LIGHTS OFF AT END OF TRAINING.
 F: BATTERY CHARGING FACILITY (LOCATED BEHIND BLEACHERS) IS FOR RANGE SUPPORT CONTRACTOR USE ONLY.

Figure-2



WEAPONS CLEANING AREA AND LZ CARDINAL

A: WEAPONS CLEANING AREA MUST BE PROPERLY POLICED AND LIGHTS TURNED OUT UPON COMPLETION OF TRAINING.
 B: LZ-CARDINAL IS THE MEDEVAC LZ FOR RANGE 11.
 C: LZ CARDINAL MUST BE REQUESTED SEPARATELY FOR USE AS BIVOUAC OR ALTERNATE AMMO STORAGE.

Figure-3

VIEWS TO THE SOUTH/SOUTHEAST JUST BEYOND MAIN FIRING LINE
NOTE LOCATION OF LEFT AND RIGHT LATERAL LIMIT MARKERS: BLACK/WHITE POSTS



Figure-4



Figure-5

VIEW SHOWING FORWARD EDGE OF MANEUVER BOX AT THE LIMIT OF ADVANCE (LOA)

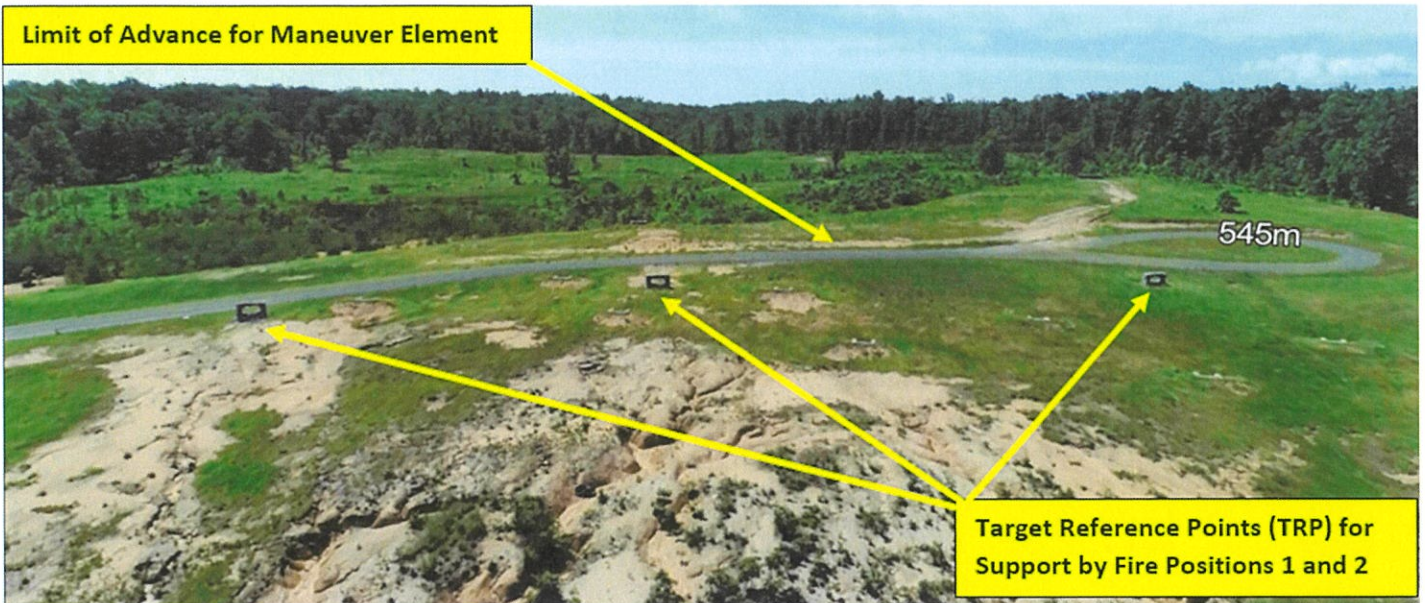
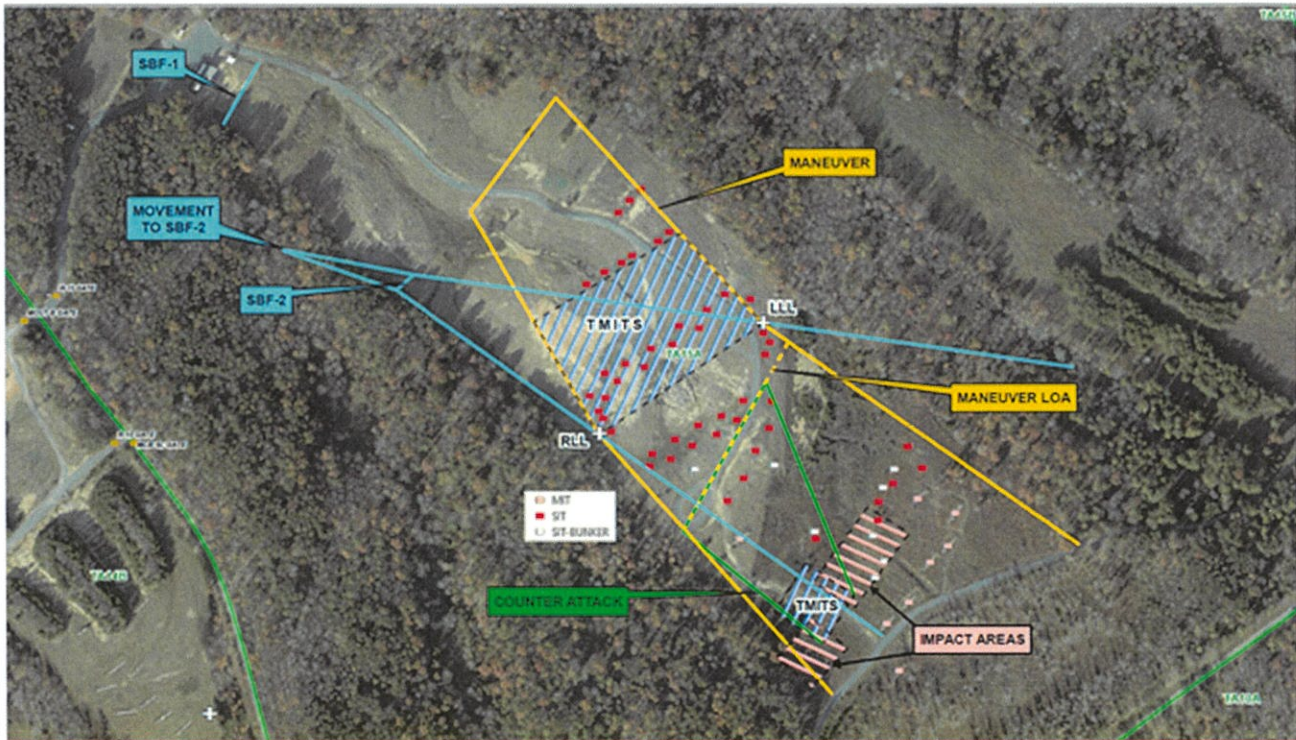


Figure-6

VIEW LOOKING NORTH/NORTHWEST (UP RANGE) TO SHOW LOCATION OF AUTOMATED TARGETS



Figure-7



RANGE 11 GENERAL SCHEME OF MANEUVER

NOTE: ASSEMBLY AREA IS TYPICALLY IN THE TREE LINE TO THE NORTH/NORTHEAST OF THE MANEUVER BOX.

1- MANEUVER BOX:

- A: START FIRE LEFT: 18STH7994072850 / START FIRE RIGHT: 18STH7986272754
- B: LIMIT OF ADVANCE (LOA) STOP FIRE LEFT: 18STH8006772703 / STOP FIRE RIGHT: 18STH7993572619
- C: PRINCIPAL DIRECTION OF FIRE: 151.74° (GRID)

2- SUPPORT BY FIRE (SBF) POSITION 1 AND MAIN FIRING LINE FOR STATIC FIRE:

- A: LEFT FIRING POSITION – 18STH7968272888 / RIGHT FIRING POSITION – 18STH7965072835
- B: PRINCIPAL DIRECTION OF FIRE: 118.79° TO 132.57° (GRID)
- C: WHEN USED FOR SBF, THIS IS THE ONLY FIRING POSITION FOR 60MM FULL RANGE PRACTICE (FRP) OR ILLUM MORTARS. ANY OTHER USE OF MORTARS OR MORTAR FIRING POSITIONS MUST BE APPROVED BY IRSO 60 DAYS IN ADVANCE.
- D: 60MM FRP AND ILLUM ARE LIMITED TO MAXIMUM OF CHARGE-1.

3- ALL 60MM FRP MORTARS MUST IMPACT IN THE TWO DESIGNATED IMPACT AREAS ABOVE TO AVOID DAMAGE TO STATIONARY/MOBILE INFANTRY TARGET SYSTEMS (SITS/MITS) AND TIMITS. SEE FIGURE-12.

- A: LEFT MORTAR BOX (LARGE): 18STH8019972489-18STH8023372466 / 18STH8018472402-18STH8015072426
- B: RIGHT MORTAR BOX (SMALL): 18STH8014772394-18STH8017872368 / 18STH8014672336-18STH8011772362
- C: PRINCIPAL DIRECTION OF FIRE: 132° (GRID)
- D: 60MM FRP MORTARS ARE NOT AUTHORIZED FOR OVERHEAD FIRE.

4- SUPPORT BY FIRE (SBF) POSITION 2: LEFT FIRING POINT- 18STH7981172701/RIGHT FIRING POINT-18STH7979672688

- A: MOVEMENT TO SBF-2 AUTHORIZED ONLY AFTER SBF-1 HAS CEASED FIRE ACCORDING TO UNIT SIGNAL PLAN.
- B: FIRING FROM SBF-2 MUST SHIFT/CEASE FIRE WHEN MANEUVER ELEMENT ADVANCES ACCORDING TO UNIT SIGNAL PLAN.

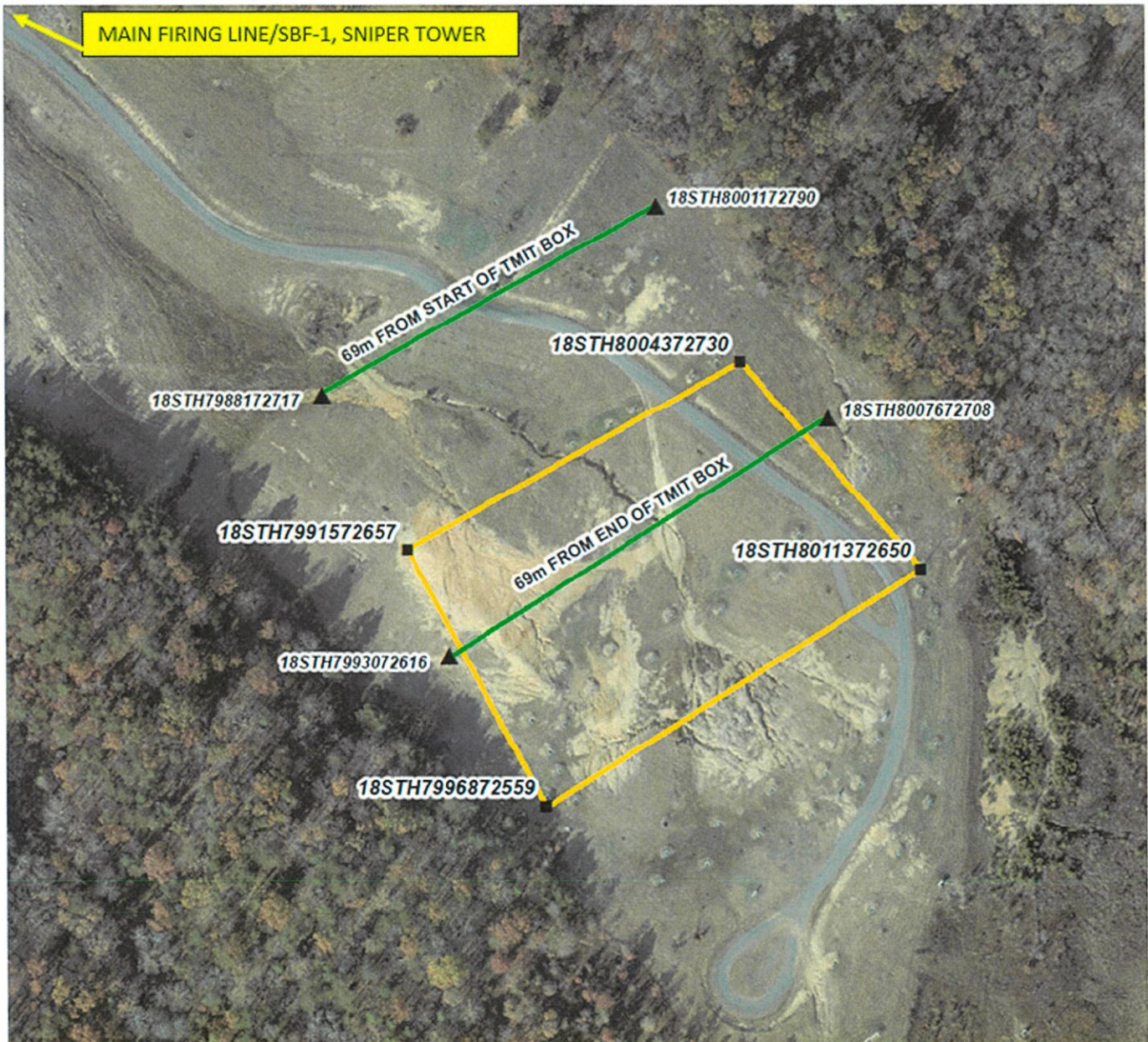
5- TIMITS: SEE FIGURE 9 FOR OP-BOX-1 MANEUVER AND FIGURE 10 FOR OP-BOX-2 COUNTERATTACK

6- ALL FIRING AND TARGET PLACEMENT MUST BE BETWEEN THE LEFT AND RIGHT LATERAL LIMITS INDICATED ABOVE AND SHOWN ON THE RANGE BY THE BLACK/WHITE SIGNS AND FIGURE 4.

7- SUPPORT BY FIRE POSITIONS ARE NOT AUTHORIZED TO ENGAGE TIMITS DUE TO CONFLICTS WITH RANGE 16.

8- 60MM FULL RANGE PRACTICE MORTARS ARE NOT AUTHORIZED TO ENGAGE TIMITS.

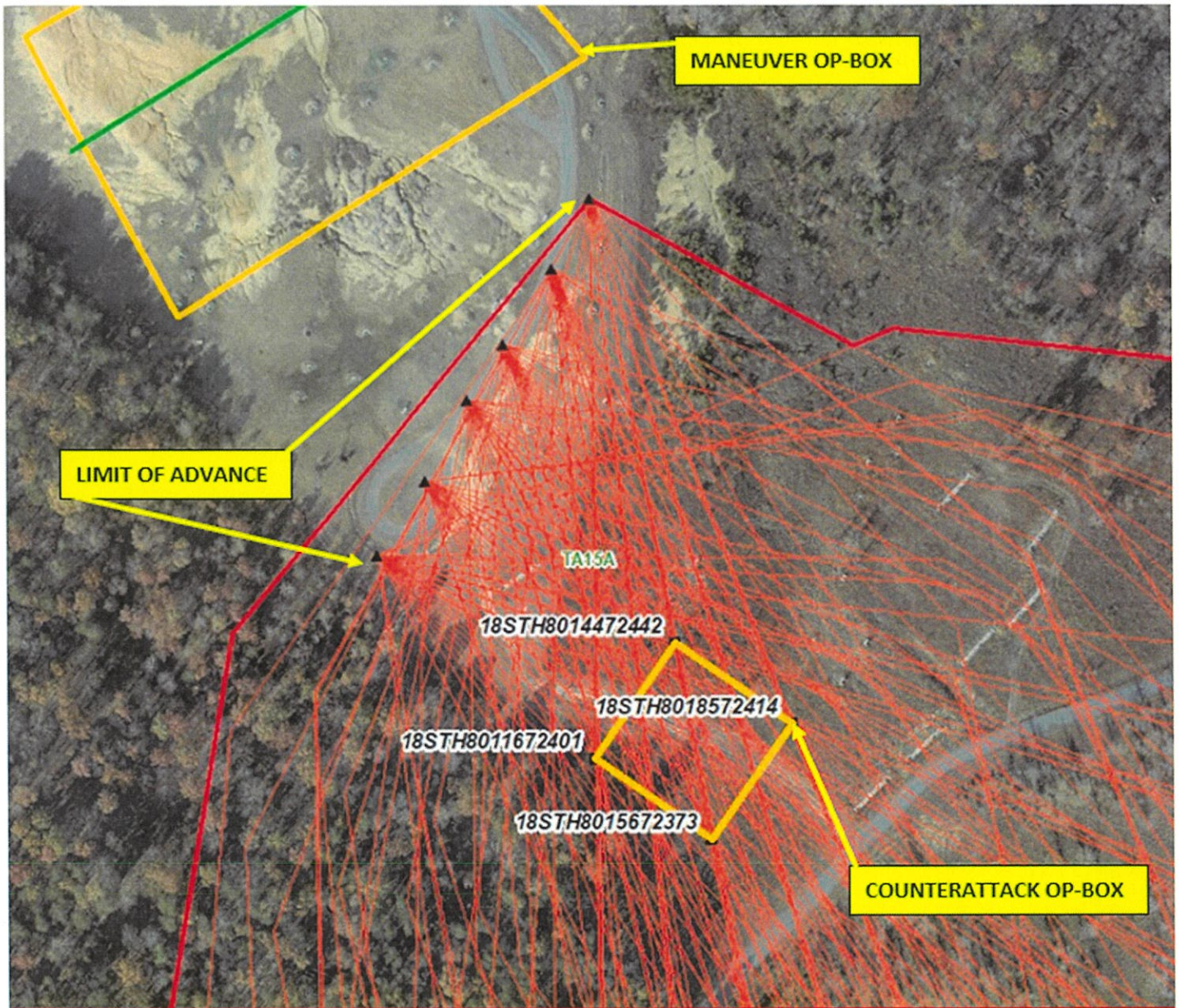
Figure-8



TMIT OP-BOX-1 MANEUVER

- A: OIC/RSO MUST BRIEF: MANEUVER ELEMENT ONLY ENGAGE TIMITS TO THEIR DIRECT FRONT OF MOVMENT DOWN RANGE.
- B: OIC/RSO MUST BRIEF: MANEUVER ELEMENT MUST NOT EXCEED THEIR ASSIGNED SECTOR OF FIRE.
- C: OIC/RSO MUST BRIEF: MINIMUM SAFE ENGAGEMENT DISTANCE ON TIMITS WITH ALL 5.56 IS 69M.
- D: OIC/RSO MUST BRIEF: CROSSFIRE IN THIS OP-BOX IS STRICTLY PROHIBITED.
- E: TIMITS MAY BE ENGAGED FROM THE GREEN START FIRE LINE INDICATED ABOVE.
- F: LIMIT OF ADVANCE ON TIMITS IS THE GREEN END FIRE LINE INDICATED ABOVE.
- G: TIMITS ARE AUTHORIZED TO MOVE IN ANY SCENARIO THE TERRAIN ALLOWS INSIDE THIS OP-BOX.
- H: TIMITS MUST EGRESS DOWN RANGE AS MANEUVER ELEMENT ADVANCES TO MAINTAIN THE MINIMUM SAFE ENGAGEMENT DISTANCE.
- I: NEUTRALIZED TIMITS MUST EXIT OP-BOX IN THE MOST DIRECT/SAFE ROUTE POSSIBLE TO MITIGATE SECONDARY RICOCHET HAZARDS.
- J: USE OF 60MM FULL RANGE PRACTICE MORTARS AGAINST TIMITS IS PROHIBITED.
- K: USE OF 7.62MM AND ABOVE IS NOT AUTHORIZED IN THIS OP-BOX DUE TO CONFLICTS WITH RANGE 16.
- L: USE OF PISTOL AND SHOTGUN CALIBERS IS NOT AUTHORIZED IN THIS OP-BOX DUE TO CONFLICTS WITH RANGE 16.
- M: THE SUPPORT BY FIRE POSITIONS ARE NOT AUTHORIZED TO ENGAGE TIMITS IN THIS OP-BOX DUE TO CONFLICTS WITH RANGE 16.

Figure-9



TMIT OP-BOX-2 COUNTERATTACK

- A: OIC/RSO MUST BRIEF: THIS IS THE ONLY AREA OF RANGE 11 WHERE CROSSFIRE IS AUTHORIZED.
- B: TMITs MAY BE ENGAGED FROM ANYWHERE ALONG THE LIMIT OF ADVANCE INDICATED ABOVE.
- C: TMITs ARE AUTHORIZED TO MOVE IN ANY SCENARIO THE TERRAIN ALLOWS INSIDE THIS OP-BOX.
- D: USE OF 7.62MM AND ABOVE IS NOT AUTHORIZED IN THIS OP-BOX DUE TO CONFLICTS WITH RANGE 16.
- E: 5.56MM IS THE ONLY CALIBER AUTHORIZED IN THIS OP-BOX.
- F: USE OF PISTOL AND SHOTGUN CALIBERS IS NOT AUTHORIZED IN THIS OP-BOX DUE TO CONFLICTS WITH RANGE 16.
- G: THE SUPPORT BY FIRE POSITIONS ARE NOT AUTHORIZED TO ENGAGE TMITs IN THIS OP-BOX DUE TO CONFLICTS WITH RANGE 16.
- H: USE OF 60MM FULL RANGE PRACTICE MORTARS AGAINST TMITs IS PROHIBITED.

Figure-10

WEAPONS ACCOMMODATED: Detailed list is maintained in the Range Facility Management Support System (RFMSS).

AMMUNITION AUTHORIZED: Detailed list is maintained in the Range Facility Management Support System (RFMSS).

- Pistol (all)
- Shotgun (All)
- 5.56mm (All)
- 40mm Handheld, Illum/Practice
- 60mm Mortars (Full Range Practice and Illum only)
- 7.62mm X 51mm Ball/link
- 7.62mm X 51mm Special Ball (.308)
- .300 WinMag/Norma Mag (Main firing line and Sniper Tower only)
- .338 Lapua Mag/Norma Mag (Main firing line and Sniper Tower only)
- AT-4 9mm Tracer only
- SMAW 9mm Tracer only
- M72 LAAW Sub-Cal Trainer only
- Grenade illum/practice
- 1/4LB TNT/Artillery simulators
- Smoke/Pyrotechnics

TARGETS/SIMULATORS/DEVICES.

- Automated (Auto) Targets: 60 Stationary Infantry Targets (SITS) and 8 Moving Infantry Targets (MITS) with SACON/earth protective walls out to a max range of 850m.
- 7 Training IED and Simulator bunkers with SACON protective walls.
- Portable Infantry Targets (PITS), Training IED's, simulators, etc. are approved for this range.
- All targets and systems above must be coordinated through the Training Systems Support Desk (TSSD).
- Additional targets are limited to paper, wood, plastic and approved ballistic Steel Reactive Targets (SRT).
- Pallets and tires are not authorized targets or target reference points.
- OIC/RSO must ensure all targets are placed and engaged from positions, so the gun-target lines and all rounds fired do not exceed the left and right lateral limits.
- Steel reactive targets (SRTs) must be a minimum of 3/8" thick and constructed of AR-500 or greater steel.
- Enhanced Performance Round (EPR) ammunition (M855A1/M80A1) is NOT authorized to be fired on SRTs or steel protective plates for Portable Infantry Targets (PITS).
- SRT will not be placed within 20' to the side or 20' behind target bunkers (see Figure-11).
- SRT will not be engaged closer than 100m with 5.56mm or 7.62mm for targets provided by unit, 150m for TSSD provided SRT.
- Contact Training Support Center (TSC) at (703)432-7026/7969 for target support or questions.

Trackless Mobile Infantry Targets (TMITs):

- TMITs are approved for this range and must be used in accordance with the following instructions and Figure-9 and Figure-10.

-TMITs will only be engaged with 5.56mm and 40mm practice grenades on Range 11 unless approved 60 days in advance by the IRSO due to conflicts with Range 16.

-OP-BOX-1 Maneuver: TMITs may execute any scenario the terrain allows in this Op-Box. TMITs engaged by the Maneuver Element in this Op-Box (Figure-9) must adhere to the following guidance:

1: OIC/RSO must brief all personnel that crossfire is **NOT** authorized in this OP-Box.

2: OIC/RSO must brief all personnel to only engage targets to their direct front and not exceed their sector of fire for any reason.

3: OIC/RSO must brief all personnel that once a TMIT is neutralized it is out-of-play and not to engage as the steel chassis presents additional ricochet hazards.

4: OIC/RSO must brief all personnel that TMITs will not be engaged from either of the SBF positions. Engaging TMITs with 60mm FRP Mortars is strictly prohibited.

5: OIC/RSO will coordinate with the TMIT Operators to ensure the TMITs maintain the minimum safe engagement distance from the maneuver element. As personnel advance, TMITs must egress to maintain minimum 69m safe engagement distance.

6: OIC/RSO will coordinate with the TMIT Operators to ensure the TMITs egress from the Maneuver Area as swiftly and safely as possible once they are neutralized to mitigate the additional ricochet hazards. Targets down and movement to the East or West are preferred.

-OP-Box-2 Counter Attack: TMITs may execute any scenario the terrain allows and can be engaged from any point along the Limit of Advance (LOA) into Op-Box-2 (Figure-10).

1: This is the **ONLY** scenario on Range 11 where crossfire is authorized.

2: Firing beyond the LOA is prohibited.

-All new events must be coordinated with the Installation Range Safety Officer (IRSO) no less than 60 days prior to any new event.

Minimum engagement distance for Trackless Mobile Infantry Targets (TMITS):

- .338 (All): 375m (Requires prior approval by the IRSO)
- .300 (All): 375m (Requires prior approval by the IRSO)
- 7.62mm: 150M (Requires prior approval by the IRSO)
- 5.56mm (steel penetrator): 69 meters
- 5.56mm (soft core): 23 meters
- 12ga Shotgun: Not authorized. Geometry of gun-target lines will exceed the limits of this range.

- Pistol calibers (non-magnum): Not authorized. Geometry of gun-target lines will exceed the limits of this range.

Minimum engagement distances for SRT:

- Pistol: 7 meters
- Shotgun (buck/bird): 10 meters
- Shotgun (slug): 50 meters
- 5.56mm/.223 Ball/link: 150 meters for TSSD targets
100 meters for unit-owned targets
- 7.62mm Ball/link: 150 meters for TSSD targets
100 meters for unit-owned targets
- 7.62mm Special Ball: 150 meters
- .338 and .300 (All): 375 meters

- Approved foreign weapons ammunition
 - Pistol: 7 meters
 - 5.45mm: 150 meters for TSC targets
100 meters for unit-owned targets
 - 7.62mm Ball and linked: 150 meters for TSC targets
100 meters for unit-owned targets
 - 7.62mm x 54R: 150 meters for TSC targets
100 meters for unit-owned targets

PRIMARY DIRECTION OF FIRE: Firing line - South East
Enveloping force - South East

RANGE USE SPECIAL INSTRUCTIONS:

1. All range regulations (MCBO 3570.1B) and the Range 11 SOP must be adhered to.

2. Live Fire Sniper Events from the MOUT facility into Range 10A conflicts with this range. OIC/RSO must provide a barrier and road guard 75m inside the Range 11 gate and strictly control all incoming and outgoing personnel. Direct communication with the OIC/RSO for the Sniper event at MOUT is required.

3. The only weapons and ammunition approved for use on this range are listed in this SOP and in RFMSS. There shall be no deviation from or modification to the approved weapons and ammunition.

4. The Officer-in-Charge (OIC) shall be the rank of Staff Sergeant or above and will be certified in accordance with MCB Range Regulations. The Range Safety Officer (RSO) shall be the rank of Sergeant or above and will be qualified in accordance with MCBQ Range Regulations (MCBO 3570.1B) and MCO 3570.1C. The OIC and RSO must both be present during all live-fire.

5. Ensure range flags are posted, ear protection is worn (eye protection for steel), safety brief is given, Range Control contacted, and all fires are directed between the left and right lateral limits markers (black and white striped).

6. The OIC/RSO will utilize the Post Inspection Checklist in Appendix-A and conduct a pre-inspection of the range and associated areas. Any discrepancies not noted in a pre-inspection become the responsibility of the unit during the post inspection. All brass, trash, targets, and materials will be removed completely at the end of training by the using unit. **This includes any trash in the Port-A-Johns.** A Range Safety Specialist will conduct a thorough post inspection for the range.

7. When SRTs are used, they will be positioned in accordance with the steel target guidance portion of the range SOP. They will be positioned as to not allow "splash" or fragmentation of projectiles to impact the target mechanisms behind the SACON protective walls.

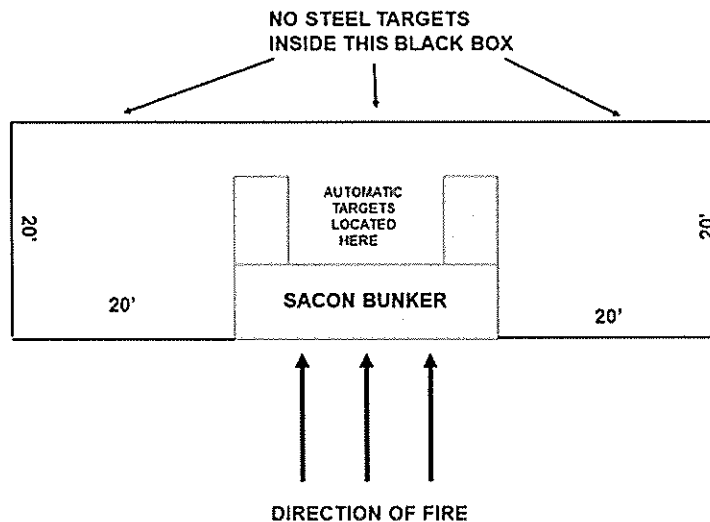


Figure-11

8. Automatic fire is authorized in 6-9 round bursts only.

9. Firing on the move is authorized in accordance with the following procedures:

- Movement will be restricted to walking straight forward, to the rear and simple button-hook techniques.

- All shots will be directed straight downrange.

- There will be no more than two shooters per instructor/safety supervisor moving at a time. (Example: 7 shooters = 4 instructor/safety supervisors).

- There will be at least one target width/3 meters separation between shooters.

- Targets fired upon will be no farther than 50m.

- No steel targets will be engaged with rifles while firing on the move. If engaging steel targets on the move with pistol or shotgun, there will be no more than one (1) shooter and (1) instructor/safety supervisor moving downrange at a time.

- Individual shooters will fire at no more than two targets at a time while firing on the move (oriented straight downrange).

- Semi-auto/single shots only.

10. Glass targets (Snipers) are authorized with the following restrictions:

- a. All glass fragments/spalling will be completely removed from the range upon completion of training. This can be done by utilizing drop cloths/sheets.

- b. For angled glass shots, the target will be positioned so that the gun-target line (the shot) is oriented straight down range.

- c. Minimum engagement distance for glass targets is 100m.

11. HERO sensitive munitions are commonly used on this range. It is the OIC/RSO responsibility to understand all capabilities and limitations of their munitions.

12. When the Support by Fire (SBF) positions are used, they will be conducted as outlined in Figure-8 above. SBF positions will shift/cease fire when maneuver element unmask from the assembly area in the tree line and begins their fire and movement. Target operators will ensure SBF targets cease operation at that time. SBF with 60mm FRP and 7.62mm are not authorized against TMITs.

13. Maneuver Element must turn south/southeast and orient all fire downrange between main left and right lateral limit signs. Target operators will ensure targets are exposed in an order to channelize live fire in this direction. Additionally, TMIT operators will comply with the special instructions in Figure-19 and Figure-10 as well as paragraphs above.

14. Maneuver Element can consolidate on far road between left and right lateral limit signs oriented downrange awaiting counterattack. **This is the Limit of Advance (LOA) for live-fire forward movement see (Figure-8).**

15. Crossfire is not authorized on this range with exception of Op-Box-2 Counterattack in Figure-10. No one will fire across the frontage of the range and must stay in their sector of fire to their direct front. Situational awareness is critical and must be prioritized by the OIC/RSO.

16. Artillery simulators are authorized for use on this range. Great care and situational awareness will be exercised while utilizing them.

17. Firing from the sniper tower cannot be conducted with individuals on the main firing line. See Figure-2.

18. Climbing on, rappelling from, or helo-ops on the towers is prohibited.

19. Mortars will only be fired from SBF-1, max charge 1 and:
-FRP and Illumination are the only mortar rounds authorized on this range.
-FRP must impact target boxes indicated in Figure-8 and Figure 12.
-FRP are not authorized against TMITs.
-OIC must account for all FRP mortar rounds to be flagged by RSS during Post Inspection. FRP's can only retrieved by EOD.

60mm Full Range Practice Mortars Target Boxes

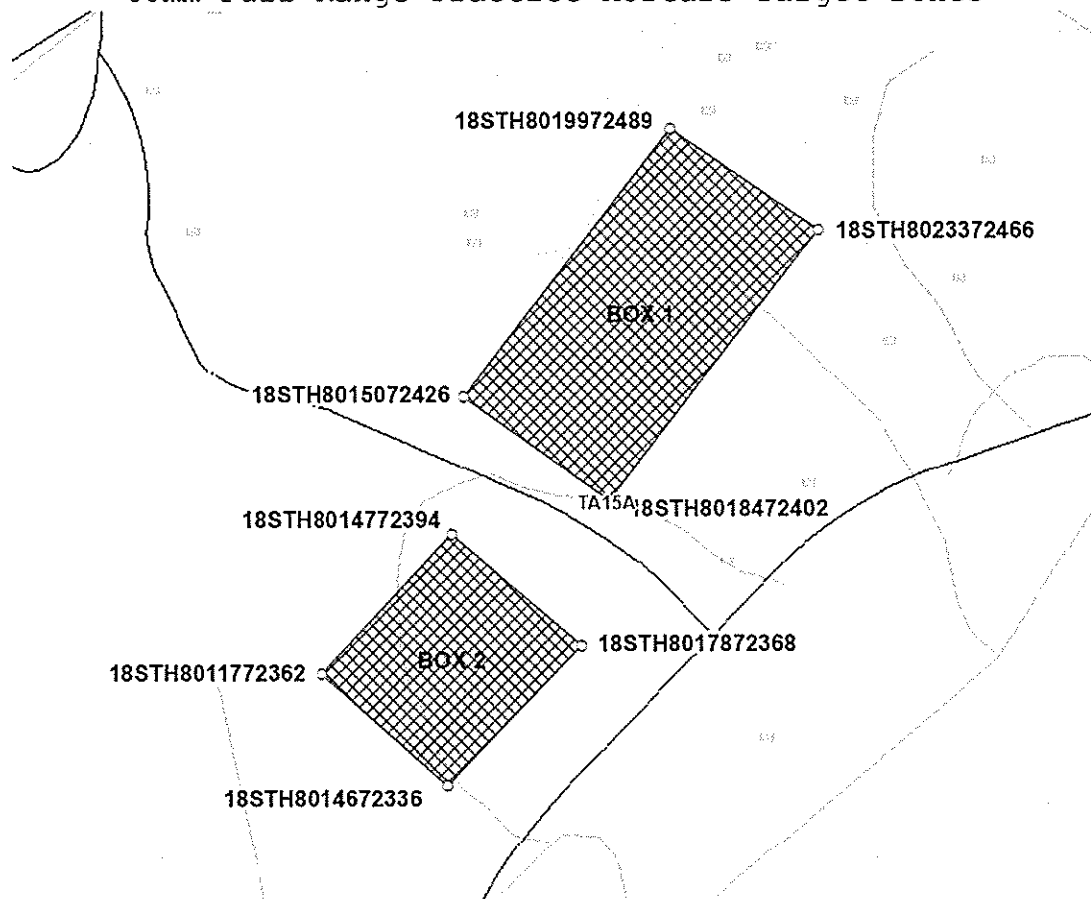


Figure-12

20. Mortars will not be fired over the heads of troops.

21. Overhead fire (direct fire) is allowed on Range 11. Overhead fire precautions are addressed in the DA-PAM 385-63. Some specifics are:

- Only ammunition cleared for overhead fire will be used.

- Weapons will be fired from a stationary position only.

- Weapons will only be ground or vehicle-mounted, will utilize tripods with T & E devices and will use positive stops to prevent crossfires and depression of the muzzle.

- Weapons will be test-fired on targets prior to the live-fire event to ensure accuracy and to test effectiveness of traverse and depression stops. Once test-fired, the weapons/vehicles will not be moved until all firing is complete.

- All other precautions for overhead fire in DA-PAM 385-63 will be strictly adhered to.

22. Units that do not occupy their range within two hours of their scheduled occupy time will lose the use of that range for that day.

23. Units that have requested contractor support (PITS targets, Training IED's, simulators, etc.) are required to contact a Government representative (TECOM Systems Support Officer (SSO) or Fire Desk) if the unit will not be present on the specified range within 1 hour of the approved time in RFMSS.

24. Units that have occupied a range with approved contractor support (PITS targets, Training IED's, simulators, etc.) and that have not begun to use that support within 2 hours of the approved time in RFMSS will forfeit all contracted support for the day.

25. Units that are training with contractor support (PITS targets, Training IED's, simulators, etc.) that place themselves into a voluntary check fire for 2 hours or more during the approved support hours will forfeit remaining support for the day.

NOTE: Units that encounter situations where contractor support (PITS targets, Training IED's, simulators, etc.) is delayed or interrupted by circumstances beyond the control of the requesting unit (RMB directed check fire, ASP support, MEDEVAC, etc.) must contact a Government representative (SSO or Fire Desk) in order to arrange continued support within the scope of the contract and available assets.

26. If Training IED's or simulators, are to be used in this facility, qualified personnel trained on the systems must be present.

FACILITIES (Number of each):

Towers: 2 (Sniper Tower and Range Support Contractor Observation)
Sheds: 1
Ammo Breakdown: 1
Parking: YES
Head facility: 2 Porta-Johns (OIC/RSO must report when near full and clear of all trash and debris)
Description of other structures: Covered bleachers, battery charging station

UTILITIES AVAILABLE:

Electricity: Yes
Lights: Yes
Water System: None

INSTALLED COMMUNICATIONS: None

<u>MEASURED DISTANCES:</u>	<u>MILES</u>	<u>MGRS</u>
TBS	8.5	87106390
ASP:	13.1	91256605
WTBN:	9.6	87906780
EMT/Fire (Fire House 3):	10.6	89606410
Camp Upshur:	4.5	80007860
Range Control:	9.0	87426350
Mainside Gate	13.5	94406440
Nearest MEDEVAC LZ	0.1	79607290 (LZ Cardinal)

Directions to MEDEVAC LZ: Grid: 18STH7954372890 Located in open area behind the Weapons Cleaning Area (Figure-3).

LASERS AUTH: Class 1 - 3R. Standard aiming devices mounted on approved service rifles. Class 3B can be fired if safety filter is on, reducing power output.

AVAILABLE DAYS/HOURS: 362/All

AREA SUITABILITY:

<u>Unit Type</u>	<u>Unit Size</u>	<u>No. of Units</u>
Combat arms	Company	1
	Platoon	1
	Squad	2

GEOGRAPHICAL DATA:

Access Routes MCB-5 from MCB-8 or
MCB-5 from MCB-6
Soil Type Dirt/rock
Terrain Type Small rolling hills
Vegetation Grass/woodland

COMMUNICATION REQUIREMENTS:

1. A radio check is required immediately upon occupying any portion of the RTA, every 30 minutes at top/bottom of the hour in a live fire status and every 3 hours top of the hour in a non-live fire status.
2. The Range Control Facility (RCF) Fire Desk Net Control call sign is "Range Control". Your call sign is "**RANGE 11**".
3. The primary RCF Fire Desk Net Control frequencies are: ELMR talk group "RC Safety" (ground) and 323.7 AM UHF (air).
4. The secondary RCF Fire Desk Net Control is telephone, numbers: 703-784-5321 or 5322.
5. OIC/RSO will monitor the RCF primary and secondary Safety Nets at all times. Instant communication is required.
6. Any unit with organic ELMR radios will have their ELMR radios programmed with the "RC Safety" talk group and use those radios as their primary means of communication within the RTA.
7. Units without organic ELMR assets will be issued ELMR radios from RMB upon check-in.
8. Approved Non-ELMR radios are only authorized for internal communication (ground).
9. If the RCF cannot reach a unit within the RTA via primary communication, the unit will be contacted via the secondary means of communication.
10. Upon loss of primary communication the OIC/RSO will initiate a "check fire"/cease training status and will contact the RCF via secondary communication. This communication will be maintained while primary communication is being restored. Units may only resume firing/training once primary communication has been re-established and clearance is granted by the RCF.

INJURY CLASSIFICATIONS:

Injuries are classified into the following categories in order to aid in casualty evacuation from the RTA.

1. ROUTINE. Routine injuries are those injuries that are not threatening to life, limb or eyesight; and conditions or illnesses treatable by medication or procedures available at the base medical facilities.
2. PRIORITY. Priority injuries are those injuries that require immediate medical attention but are not threatening to life limb or eyesight if treated promptly.
3. URGENT. Urgent injuries are severe injuries that are threatening to life, limb, or eyesight and require immediate medical attention.
4. MASS CASUALTY. A mass casualty is a series of injuries with multiple priority and urgent medical patients.

MEDICAL EVACUATION (MEDEVAC) PROCEDURES:

1. Injury occurs.
2. Range will immediately cease fire.
3. Medical support evaluates/treats injured personnel.
4. Range OIC/RSO notifies the RCF of the injury, is the victim conscious/unconscious and what type of MEDEVAC transportation is requested (ground/air).
5. The OIC/RSO must maintain constant radio contact with Range Control and awaits further instructions.



Installation Range Safety Officer

29 March 2023

Range 11/LZ Cardinal Post Inspection Checklist

The following checklist will be used to assist the OIC/RSO and Range Safety Specialist when conducting post inspections. If any discrepancies are noted, they will be addressed prior to the unit departing. If maintenance is required, RSS will inform the Range Operations Control Center (ROCC) supervisor.

Required Task	SAT/ UNSAT	Discrepancy
Gate/gates properly marked with signs, no obvious damage, pins, locks, and keys serviceable		
Flagpole: serviceable all items in place		
Road condition: obvious damage/down trees		
Porta-Js cleaned, upright, in proper location		
Porta-Js accounted for: Number Assigned: 2		
Ammo Break-out shed/roll-up; clean, swept, secured, obvious damage reported		
Lateral limit/range markers visible/serviceable		
Targets visible/obvious damage		
All trash, pallets, target materials, and brass removed		
LZ area: clean and obvious damage noted		
Bleachers: check lights, power off, policed		
Range Tower: secured, power off, policed		
Cleaning Bench policed and clean		
Sniper Tower policed; windows/doors secured/locked		
Sniper Tower perimeter sandbags in place		
Number of Targets:		
Automated targets: obvious damage reported, targets free from any debris		
SACON target coffins: Obvious excessive damage		
Battery Charge Station: Power on (hum), obvious damage, no alarm		
All other power and lights turned off		
Additional Notes:		